

Pseudoxanthoma elasticum: An image article

Christiana Williams*

Longdom Publishing, Avenue Roger Vandendriessche, 18, 1150 Brussels, Belgium

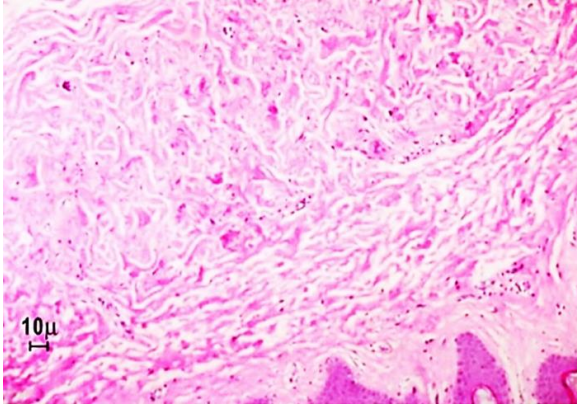


Figure 1: An unusual genetic disease that induces separation and mineralization of elastic fibres in different tissues is pseudoxanthoma elasticum (PXE), also known as GronbladStrandberg syndrome. It can be found that the elastin fibres are warped and altered with calcium deposits by using haematoxylin-eosin staining and viewing through the optical microscope.

Correspondence to: Christiana Williams, Longdom Publishing, Avenue Roger Vandendriessche, 18, 1150 Brussels, Belgium, E-mail: info@longdom.com

Received: February 25, 2021; **Accepted:** February 26, 2021; **Published:** February 27, 2021

Citation: Williams C (2021) Prejuvenation effects of the multi-modality approach: An image article. *Dermatol Case Rep* 6:182. doi: 10.35248/2684-124X.21.6.182

Copyright: © 2021 Williams C. This is an open-access article distributed under the terms of the Creative Commons Attribution License, which permits unrestricted use, distribution, and reproduction in any medium, provided the original author and source are credited.