

Risk of embolization of blood vessels with soft-tissue fillers.

Christiana Williams*

Longdom Publishing, Avenue Roger Vandendriessche, 18, 1150 Brussels, Belgium

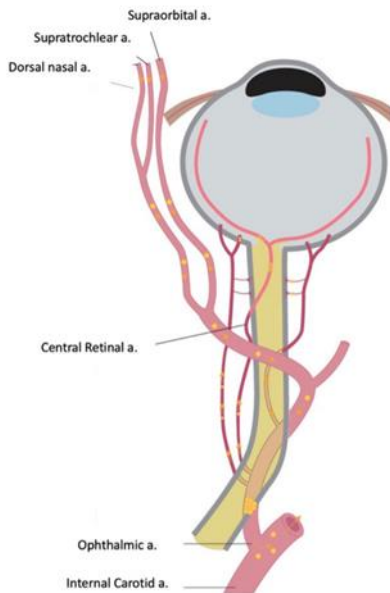


Figure 1: Since injection of the substance into the supraorbital, supratrochlear, or dorsal nasal arteries, both of which are branches of the internal carotid artery, vision loss due to retrograde flow of filler to the central retinal artery. Owing to anastomosis of the branches of the ophthalmic artery, there is also a chance of intravascular injection into the branches of the external carotid.

Correspondence to: Christiana Williams, Longdom Publishing, Avenue Roger Vandendriessche, 18, 1150 Brussels, Belgium, E-mail: info@longdom.com

Received: February 25, 2021; **Accepted:** February 26, 2021; **Published:** February 27, 2021

Citation: Williams C (2021) Risk of embolization of blood vessels with soft-tissue fillers. *Dermatol Case Rep* 6:179. doi: 10.35248/2684-124X.21.6.179

Copyright: © 2021 Williams C. This is an open-access article distributed under the terms of the Creative Commons Attribution License, which permits unrestricted use, distribution, and reproduction in any medium, provided the original author and source are credited.